

SWING CHECK VALVE, RESILIENT SEATED

Swing check valves are installed in pumping applications to prevent back flow they can be used for drinking water as well as waste water. The disc is connected to the shaft via a flexible bush that allows disc and valve seat to adjust exactly. All interior parts are stainless steel or coated with drinking water approved epoxy or EPDM.

Product description:

Resilient seated swing check valve with free shaft end. For drinking water and neutral liquids to max. 70°C

Standards:

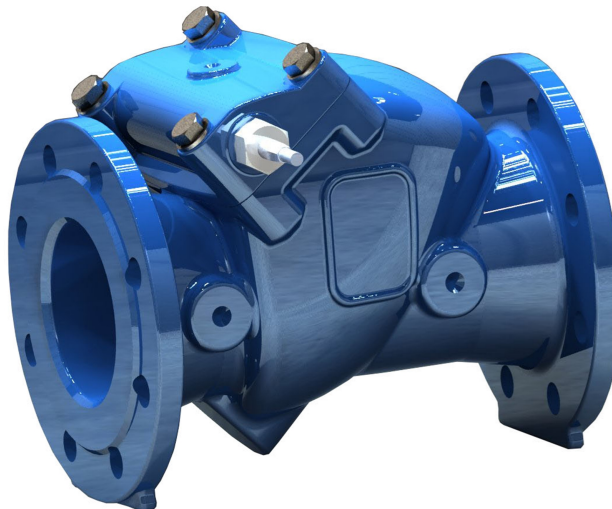
- Designed according to EN 1074 - 3
- Face to face according to EN 558 Table 2 Basic Series 10
- Standard flange drilling to EN1092-2 (ISO 7005-2), PN 10/16

Features:

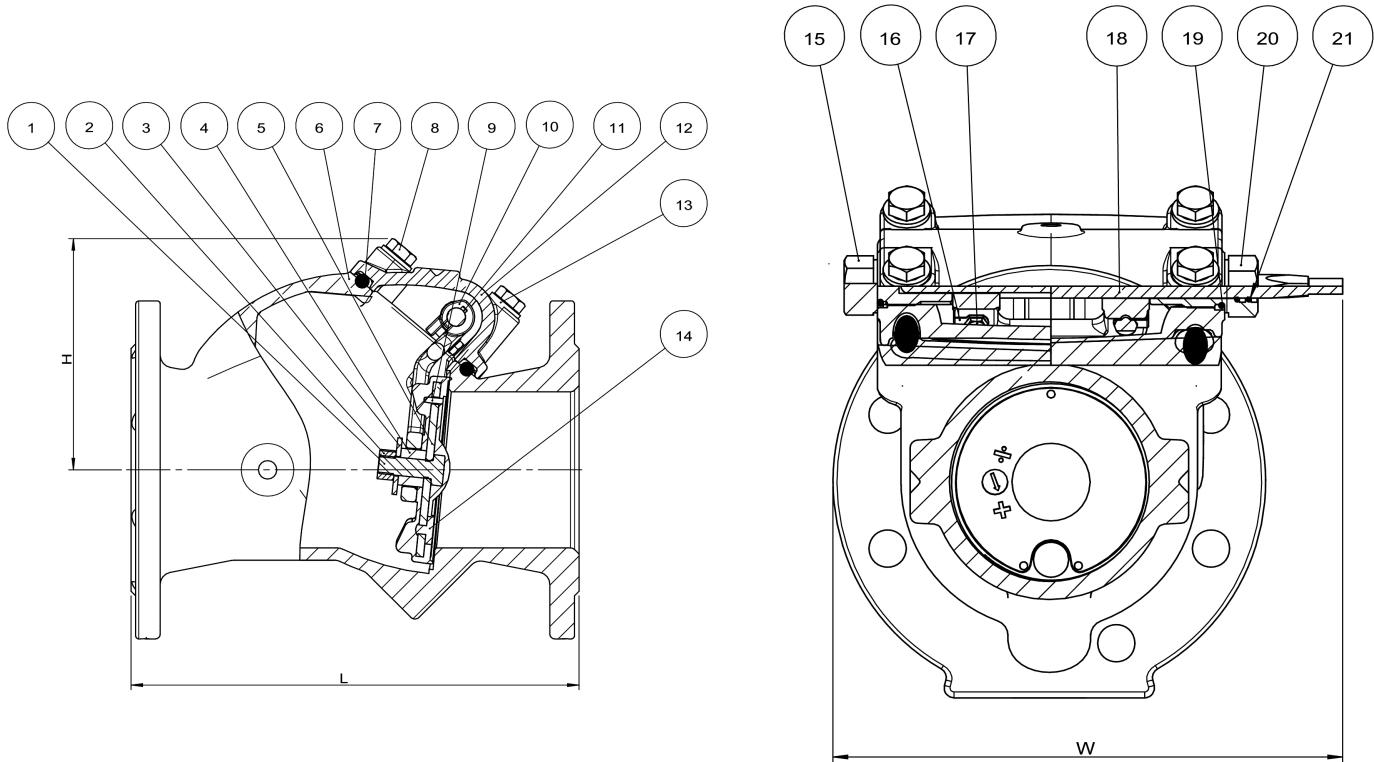
- Resilient seat provides a drop tight closure and due to the light weight it requires a minimum of force to open/close
- Shaft fitted in the bonnet allowing for easy maintenance without removing valve from pipeline
- Shaft material 1.4021 (AISI 420) stainless steel
- Free protruding shaft end for mounting of lever and weight or spring to assist valve closing and avoid water hammer
- Hinge of stainless steel for sizes \leq DN 200; ductile iron coated with drinking water approved epoxy for larger
- Ductile iron disc covered with drinking water approved EPDM
- Bonnet gasket in a groove between bonnet and body to prevent blow-out
- All seals and coatings with contact to the fluid are approved for drinking water - coating is blue, 250 μ m fusion bonded epoxy
- Disc design with a steel insert fully vulcanized with EPDM rubber
- Bosses on each side of the valve seat allow for installation of pressure gauge, by-pass, etc.

Accessories:

Lever and weight/spring, lever protection guard, proximity switch, combi-flanges, flange adaptors.



SWING CHECK VALVE, RESILIENT SEATED



Component list:

1. Bolt	Stainless steel A4	12. Bonnet	Ductile iron GJS-500-7 (GGG-50)
2. Nut	Stainless steel A2	13. Washer	Stainless steel A4
3. Washer	Stainless steel A4	14. Thrust plate	Stainless steel
4. Bushing	Polyamide	15. Bushing, closed	Brass, DZR
5. Disc	Steel / EPDM	16. Tab washer	Stainless steel A4
6. Body	Ductile iron GJS-500-7 (GGG-50)	17. Bolt	Stainless steel A4
7. Gasket	EPDM rubber	18. Shaft	Stainless steel 420
8. Bolt	Stainless steel A2	19. O-ring	NBR rubber
9. Pin	Stainless steel A4	20. Bushing, open	Brass, DZR
10. Hinge	Stainless steel 316	21. O-ring	NBR rubber
11. Key	Stainless steel A4		

dimensions:

	DN	Flange	L	H	W	Theoretical
	mm	drilling	mm	mm	mm	weight / kg
	50	PN10/16	203	110	233	13
	80	PN10/16	241	140	233	20
	100	PN10/16	292	150	256	26
	150	PN10/16	356	195	334	51
	200	PN10	495	230	386	83
	200	PN16	495	230	386	83
	250	PN10	622	270	692	183
	250	PN16	622	270	692	183
	300	PN10	698	300	692	231
	300	PN16	698	300	692	231